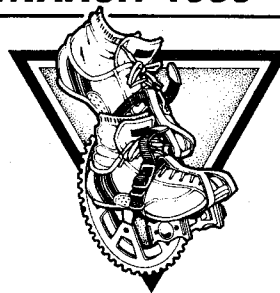


# SPOKESMAN



## SPRING FLING 1988

The 1988 version of the Harrisburg Bicycle Club's Spring Fling is scheduled for April 22-24. Leader, Bill Pickering, will guide us through Eastern Shore Maryland. Details are in process as we go to press but you may call Bill (232-1326) for more information.

The Spring Fling is made to allow you to mix and match your time and interest to the program, doing whatever parts suit you. Tentative schedule is:

Friday, April 22-Drive to Hershey Farms Restaurant, Strasburg. Start at 10 am & ride 60 mi. to our motel.

Saturday, April 23-Ride from & return to the motel: C paced ride - 45 miles

B paced ride - 75 miles

Other classes if there's interest

Sunday, April 24-Ride back to cars at Strasburg

Watch for the registration in the April Spokesman!

## MARCH SPECIAL

Now that the bike clinic is over, we are all anxious to get on the road. Many of us have gleaming new bikes or equipment to show our friends. We need a chance to use the warm new clothes we got at Christmas.

Bill Pickering and Dave LeRoy have planned a ride each Sunday afternoon during March to launch the '88 season. This East Shore ride will stay away from hills and is paced to accommodate the slowest rider. They promise no one will be left behind.

Banish the winter blahs; slenderize your solstice softness; tone-up your twinkies tummy; pep-up with Pick's prep-up rides. The ride leaves at 2 pm every Sunday in

**JOHN'S SCHWINN CYCLERY**  
 48 HOUR REPAIR SERVICE AVAILABLE



**SchwinN SALES & SERVICE**

MON - WED - THURS 9 AM - 6 PM TUES & FRI 9 AM - 9 PM  
 SAT 9 AM - 5 PM  
 (RT. 422) 406 E. PENN AVE. CLEONA


**273-4477**

- MOTOCROSS
- EXERCIZING EQUIPMENT

**Bicycle Center**

TED WITFIELD  
 Owner

101 Chambersburg Road, Camp Hill, PA 17011  
 (717) 737-1122



**Cycles Velo Pro Shop**  
*For Discriminating Bicyclists*

**Dan Kesler**  
 (717) 264-6039  
 Chambersburg, PA 17201

Professional Quality  
 — Since 1972 —

Bicycle Sales and Service

# Ski-Ko

7416 Derry St. / Harrisburg, Pa. 17111

Schwinn/Peugeot/Ross/Fuji Phone 564-4920



Quality Outdoor  
Equipment and Clothing for

- Backpacking
- Mountaineering

- Cross-Country Skiing
- Canoeing
- Kayaking
- Mountain Biking

Harrisburg  
995 Peiffers Lane  
**564-8008**

Camp Hill  
Shopping Mall  
**737-2728**

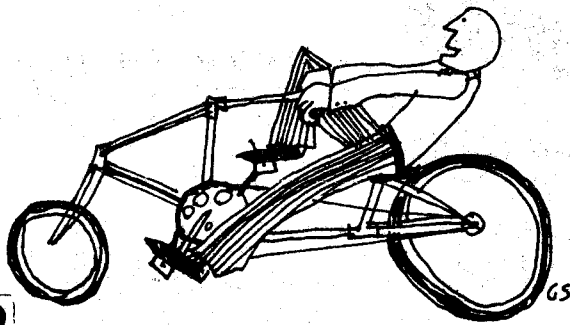
## BIKE CLINIC REPORT

By Owen Moore

The Bike Clinic is alive and well and by the time you read this we will have concluded our 4th session. In spite of the fact that the plans were made to have the clinic at HACC, we had a curve thrown when a Bicycling Class failed to materialize and our room reservation was reduced to one session. Thanks to Tome Williams, Ray Sawyer, Barb Hawk, Paul Johnson, Dave Taylor, Mike Baum, Mel Wolf, Bill Wierman, Evelyn Duncan, and Fran Moore for their help in locating an alternate location. These people pitched in by going the extra mile with suggestions as well as making contacts. THANKS!

The Swatara Township Building was our choice and we needed every bit of space we could find. The original registration of 20 swelled to over 84 bikers and helpers on the first morning. Bill Wierman had the refreshments under control and treats were brought by several others. Once again the question arises, do we eat to bike or bike to eat? Ahhh, who cares when we're having such a good time. The first morning included some instruction and good ole hands on experience in changing flat tires. Solid help with deraileur adjustment was provided by Jay Barnhart of Pedal Pushers, Ted Witfield of Bicycle Center, and Lee Miller of Holmes Bicycle Shop.

I'm starting to plan for next year now. If you know of a heated location with access to some water for coffee that is available on Saturday mornings between 8 am and noon, please let me know. We would prefer the 1st floor and could be one large room or several smaller ones. We would like to schedule it during the winter months when many of us aren't riding so much. Please send those suggestions to: Owen Moore, 411 N. 4th St., Lemoyne, PA 17043 or call 761-4822.



—BIKECENTENNIAL

\*\*\*\*\*

Sales - Service - Parts - Accessories

**HOLMES' BICYCLE SHOP**

Corner of 24th & Chestnut Streets  
Camp Hill, Pennsylvania 17011  
(717) 737-3461

George Holmes Allen Holmes

\*\*\*\*\*

## RIDE OR DREAM OF RIDES TO COME By Owen Moore

It's a fact! Members of HBC are meeting at 8 am Sunday mornings at the Alva Restaurant to just rub elbows and jawbone in preparation for the coming year of the Sunday Morning Sociables. This is a great time to introduce a new biker to the group. It immediately dispels the notion that you must race and leap tall buildings on each ride. Excuse me, it's time to eat breakfast and enjoy! A few hardy souls are braving the elements and doing some serious biking after breakfast. Interested in the good times - join us now or as the weather warms.

### DOWNTOWNERS MEET AND RIDE

Downtowners, uptowners, and those that live on the Hill are invited to participate in our Show and Go rides. When the weather is

warmer and the days lengthen, we will be getting together Friday afternoons about 5:30 for 10 to 20 mile rides. They'll range from Fishing Creek Valley Road on the north to Middletown on the south. Are you ready to ride? We are. Join us. Call Martha Colley, 238-3194, for more info.

### RIDE LEADERSHIP WORKSHOP

Keep an eye out in future issues of the Spokesman for information on a RIDE LEADERSHIP WORKSHOP. Information will be provided for prospective and veteran ride leaders as well as ride co-ordinators. We can all voice our opinions on how we would like the rides to be led. Remember, without ride leaders, the club can't offer the number or variety of rides we have enjoyed in the past.

## UPCOMING EVENTS

For more information,

call number listed or 975-9879.

For "outside-of-the-club" bike events, call Jeff Lefevre, 697-2604, for info, registration forms, details on others planning to go.

- Mar 5-10 22nd Wheelmen's Winter Rendezvous, Dr. Paul Dudley White BC, P.O. Box 1155, Homestead, FL 33030
- Mar 26 Ice Cycle Tour, Newark DE, White Clay BC, 2610 Phila. Pike D#10, Claymont, DE 19703
- Apr 17 Taxing Metric Century, Brandywine BC, Stu Baird, 927 Parkview Dr., F301, King of Prussia, PA 29406
- Apr 22-24 Spring Fling, Bill Pickering 232-1326
- May 1 Freedom "Mega" Tour, DE Valley BC, Box 497, Media, PA 19063
- May 21 Learn to Ride Ride, Mechanicsburg
- May 22 Learn to Ride Ride, Hershey
- Jun 3-5 Gear Up '88, Millersville Univ., LAW, 6707 Whitestone Rd., Baltimore, MD 21207
- Jun 5 Freedom Valley Bike-a-thon, Phila. to Valley Forge, DE Valley Council AYH, 35 S. 3rd St., Phila, PA 19106
- Jun 24-26 Blue & Gray Rally '88, Gettysburg, College, Bicycling Fed. of PA, 413, Appletree Rd., Camp Hill, PA 17011
- Aug 4-7 Eastern Tandem Rally '88, Univ. of New Hampshire, Send SASE to Tandem Club of Am., Rt. 19, Box 248, Birmingham, AL 35244
- Aug 13-14 Harpers Ferry Happening (MS Bike Tour), Mechanicsburg to WV, Marge Ciervo, 691-0983 (day), 766-6163 (eve.)

## RESOURCE CORNER

The information listed here is to assist you. We have tried to keep it up to date but information may change without our knowledge. The addresses or method contact is listed so you can confirm if you choose. We hope to be able to publish this list bi-monthly and additional information is most welcome.

## TOURING MAPS

1. **BIKECENTENNIAL**-Maps of many bike routes in the USA and other countries are available to members (\$17-\$25 depending on class) and nonmembers. Write: Bikecentennial, P.O. Box 8308, Missoula, MT 59807 phone orders Mon-Fri 9-5; 1-406-721-1776.

2. **PA BICYCLING MAPS**-Available from Penn DOT, Distribution Service Unit, P.O. Box 2028, Harrisburg, PA 17105. Statewide map free; by quadrant (NW,NE,SE,SW) \$1.25 + tax @. Road maps by county are available for \$.75 + tax @. Orders mailed out same day received. Phone: 787-6746

3. **PA ATLAS & GAZETTEER**-Detailed road maps of the state and guide to outdoor recreation. Published by DeLorme Mapping Co., P.O. Box 298, Freeport, MA 04032 Available at Wildware Outfitters and Camp Hill Distributors. List price \$12.95.

## EQUIPMENT

1. **HBC BUGGER**-A cart that attached to a bicycle to haul children or cargo. Available free to club members. Contact George Strella at 564-6220.

2. **ID TAGS**-Important ID and medical info on a dog tag with 24" or 5" chain. Different styles and accessories available. \$4.95 and up. Contact Richcraft Products, Inc., P.O. Box 125, Kershaw, SC 29067 Phone: 1-803-475-3395.

## WHAT SHOULD I PACK TO TOUR?

Have you ever experienced that nagging feeling that you forgot something after you left on a tour? Wayne Stoltzfus has listed the things he took on his cross country trip. Hope it helps.

**BIKE EQUIPMENT:** bottom bracket tool  
tools spare spokes  
spare tire tire tubes  
chain lube grease  
bike lock helmet  
water bottles handlebar bag  
bike gloves reflective vest  
cat eye and plastic bag covering  
ID necklace

**CAMPING EQUIPMENT:** tent  
air mattress air pillow  
sleeping bag candle lamp  
matches flashlight  
pillow case

**TRAVEL ITEMS:** plane tickets  
camera film & mailers  
walkman motel guide  
maps AYH card & guide  
credit cards traveler checks  
book stamps  
diary address labels  
fanny pack

**CLOTHING:** biking clothes  
(shorts, t-shirts, jerseys, shoes,  
socks) dress shirt  
dress shorts thermal underwear  
jacket warm gloves  
flip flops big handkerchiefs  
bathing suit underwear

## PERSONAL & MISCELLANEOUS:

ty-raps garbage bags  
sun glasses plastic ziploc bags  
spare glasses contacts & supplies  
chap stick prescription for glasses  
sun screen zinc oxide  
bactine toilet paper  
band-aids toilet articles  
rubber bands chaffing cream  
tear gas stun gun  
paper clips



**SATURDAY, MARCH 12, 1988**

C 9:30 am Mechanicsburg High School Leader: Mike Noll 732-0768

15-20 mi 10-12 mph

DUST OF THE COBWEBS II - Just when you thought it was safe to "Sleep-in", Doctor Mike returns... This is a good opportunity to get a few miles in before it gets so HOT later in the day!!

**SUNDAY, MARCH 13, 1988**

B/C 8:00 am Faust Jr. High School Leader: Mike Witter 263-5631

15-20 mi 10-12 mph

C 1:30 pm Mechanicsburg High School Leader: Mike Noll 732-0768

15-20 mi 10-12 mph

**SATURDAY, MARCH 19, 1988**

C 1:00 pm Mechanicsburg High School Leader: Fred Wilcox 761-3636

15-20 mi 10-12 mph

**SUNDAY, MARCH 20, 1988**

D 7:15 am City Island Leader: Owen Moore 761-4822

8-10 mi 9 mph

SUNDAY MORNING SOCIABLE - Lets make it happen! It's Sunday Sociable time again. Come on out and join the sociable fun later - Breakfast if you have time. The ride is always finished by 8:30 am, and breakfast by 9:30 am.

B/C 8:00 am Faust Jr. High School Leader: Mike Witter 263-5631

15-20 mi 10-14 mph

Cindy Kell 352-3954

C 1:30 pm Mechanicsburg High School Leader: Fred Wilcox 761-3636

15-20 mi 10-12 mph

**SATURDAY, MARCH 26, 1988**

C 9:30 am Mechanicsburg High School Leader: Mike Noll 732-0768

15-20 mi 10-12 mph

**SUNDAY, MARCH 27, 1988**

D 7:15 am City Island Leader: Owen Moore 761-4822

8-10 mi 9 mph

SUNDAY SOCIABLE - The parade is just beginning, so don't be late. Come on out and join this friendly crew for an easy paced ride, first the East shore and then the West shore.

B/C 8:00 am Faust Jr. High School Leader: Mike Witter 263-5631

15-20 mi 10-12 mph

C 1:30 pm Mechanicsburg High School Leader: Mike Noll 732-0768

15-20 mi 10-12 mph



# TEAM HARRISBURG

## -Central PA Racing-

### 1988 TEAM RACE CALENDAR

At our February 15 Team Meeting a tentative schedule of "Team Races" was developed. These will be the races that all USCF licensed Team Members will be encouraged to attend and the races that the Sponsored 14 Rider Senior II / III team will be guaranteed entry fee reimbursement. These races are:

May 1 .....National Capital Open - Washington D.C.  
 May 21 .....Letterkenny Road Race - Chambersburg, PA.  
 June 4 .....USCF District Time Trials  
 June 11.....USCF District Road Race  
 July 9 ...Keystone Health Plan Cycling Classic - Harrisburg, PA.

Remember these dates are tentative and are subject to change as the racing season progresses. Another meeting will be held later this year to determine the remaining races in the Race Calendar.

### Team Harrisburg Needs Your Support

It may seem that events like the Keystone Health Plan Cycling Classic or our weekly time trial series happen magically without much effort. Those of us who have been involved with these events know that a lot of planning and effort are required to make these races possible. Fortunately, most of the required planning and effort can and must be done before the racing season gets underway. If you have some spare time and want to help out with one of these events please contact our Team President, Tim Zeigler, at 236-4101. Prior experience is not required.

### UPCOMING EVENTS

Has anyone ever told you that you needed professional help? -- Well, the nice people at Central Penn Fitness Center and Physical Therapy, Incorporated want to provide this professional help free!!! At our April 18, 1988 Team Meeting we will have four professionals tell us everything we want to know about training and preparation for racing. Scheduled speakers and topics for this meeting are:

1. A Registered Dietician will talk about:  
Carbohydrate Loading, Eating on Rides, and Fluids,  
Electrolytes, and Hydration.
2. An Exercise Specialist will talk about:  
Training Techniques, and Self Massage.
3. A Certified Athletic Trainer will talk about:  
Common Injuries and injury prevention, and conditioning and  
Muscular Balance.
4. A Strength and Conditioning Coach will talk about:  
Appropriate and Proper weight lifting techniques, and  
Stretching.

Sounds good, doesn't it? Mark April 18, 1988 on your calendar. The meeting will be held at the Grace United Methodist Church at 3rd and Herman Streets in Lemoyne at 7:00 PM.

**Reminder to USCF Racers**

Selection of the 14 member Sponsored Senior II / III team must be finalized by the end of March. If you have not filled out an application yet, please do so now. Applications are available at Holmes Bicycle Shop in Camp Hill. We need to select the team now so that jerseys may be ordered.

**CALENDAR**

- March 6, 1988 .....Training Ride Mechanicsburg High School 1:00 PM.
- March 13, 1988 .....Training Ride Mechanicsburg High School 1:00 PM.
- March 20, 1988 .....Training Ride Mechanicsburg High School 1:00 PM.
- March 27, 1988 .....Training Ride Mechanicsburg High School 1:00 PM.

Team Harrisburg  
Board Members

- PRESIDENT:**  
Tim Zeigler .....236-4101
- VICE PRESIDENT:**  
Dave Biser .....774-2466
- TREASURER:**  
Cindy Maurer .....652-4799
- SECRETARY:**  
Jeff Lefevre .....697-2604
- NEWSLETTER EDITOR:**  
Rick Handley .....564-2752

# HOLMES' BICYCLE SHOP

## SUPER SALE

AS ADVERTISED IN APRIL BICYCLING, CYCLIST, AND TRIATHLON MAGAZINES

Three Days Only: March 25, 26, 27

- SHOES
- WHEELS
- SHORTS
- HELMETS
- GLOVES
- JERSEYS
- CAR RACKS
- TIRES

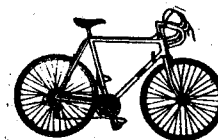
Huge savings on this season's most popular items! Pick up a complete list of bargains at the door during sale hours.

### CLIPLESS PEDALS

The world's finest at SUPER prices! MAVIC pedals (same as LOOK Competition) \$139.95 ~~\$199.95~~

### SHOES

Treat your feet to pedaling comfort—NIKE Discovery ATB shoes are perfect for all types of riding. The price will knock your socks off! Originally \$54.95 ~~\$119.95~~  
With SPECIALIZED 3900 cleated cycling shoes, you're on the road to power cycling. This shoe fits better than many \$80 models! \$54.95 ~~\$119.95~~



### COMPUTERS

AVOCET Cyclometer 20—the computer top pros like Greg LeMond and Andy Hampsten depend on! Speed, distance and time are at your fingertips. \$34.95 ~~\$49.95~~  
CATEYE Micro with dual display and cadence. \$59.95 ~~\$79.95~~



10-25% SAVINGS ON ALL WINTER CLOTHING  
UP TO 50% ON SELECTED ITEMS!!!



2331 CHESTNUT ST., CAMP HILL, PA  
PHONE: (717) 737-3461

# HARRISBURG BICYCLE CLUB RIDE SCHEDULE

## RIDE GUIDELINES

1. Arrive 10 to 15 minutes early and be ready to leave on time!
2. Make sure your bicycle is in proper working order before you arrive.
3. It's a good idea to carry a patch kit, spare tube, pump, and water bottle (water is a necessity in hot weather).
4. Ride carefully and obey traffic laws.
5. Wearing a helmet is not required, but is encouraged.
6. Leaders are not responsible for those who ride ahead of the group, or to put it another way -- if you're ahead of the leader, you are on your own ride.
7. Ride leaders and participants are jointly responsible to see that the advertised pace is maintained.
8. Always notify the leader before leaving the group.



## Rides

## RIDE CLASSIFICATIONS

- A Serious riders in top condition; 17 mph and faster.
- B+ Bikers need to be conditioned to maintain a moderately fast (14-17 mph), non-stop pace for fairly long distances.
- B Bikers in above-average condition with emphasis on exercise and fitness, 13-14 mph. Few stops.
- C+ Extra mileage or faster pace make this more difficult.
- C Moderate paced (10-12 mph) ride with recreational emphasis, about one stop per hour. Ten-speed bikes recommended.
- D For new, inexperienced and/or sociable bikers. Frequent stops, no major hills where possible. Young children will have trouble keeping up unless ride is listed for whole family.

You do not have to be a member, although we hope you'll want to join.

In choosing a ride, consider your ability. If you take a ride you aren't ready for yet, you won't enjoy it -- and you are being unfair to the other riders.

✳ Although every attempt is made to make club rides as safe as possible, HBC assumes no liability for the safety of those participating in its rides. Riders taking part do so at their own risk and are responsible for their own safety.

## SATURDAY, MARCH 5, 1988 MARCH RIDE SCHEDULE

C 1:00 pm Mechanicsburg High School Leader: Fred Wilcox 761-3636

15-20 mi 10-12 mph

DUST OFF THE COBWEBS - It's time to haul that bike out and spin a while with Fred. Fred and Mike will be alternating weekends this month, so come on out and see if you put everything back together correctly at the Bike Clinic....

---

## SUNDAY, MARCH 6, 1988

B/C 8:00 am Faust Jr. High School

Leader: Mike Witter 263-5631

15-20 mi 10-14 mph

Cindy Kell 352-3954

BIKE AND BREAKFAST RESUMES, COME ON OUT.

C 1:30 pm Mechanicsburg High School Leader: Fred Wilcox 761-3636

15-20 mi 10-12 mph



## BACK TO GETTYSBURG

Leader: Fred Wilcox

In spite of the weather, last year's tour to Gettysburg was a success so-o-o we're going back. We'll leave Mechanicsburg High School at 8 am on Saturday, May 7. Tour the battlefield in the afternoon. Dine in one of the areas many restaurants. Stay overnight at the Gettysburg Youth Hostel. Breakfast at Paul's Pancake Barn, famous for their Belgium waffles. Tour Adams County or visit the Apple Blossom Festival in Arendtsville on Sunday with a return to Mechanicsburg Sunday afternoon. This is Mother's Day weekend so bring her along. If you are a Mom join us for a real celebration.

The cost of the trip is \$7.00 for the room (\$1.00 additional for a sleep sack optional) plus your expenses for food.

This is a rain or shine trip which fills up quickly. Space is limited. Send your money to Fred Wilcox, 16 E. Green St., Shiremanstown, PA 17011. For more information call him at 761-3636.

## 2ND ANNUAL EASTERN SHORE WEEKEND

Leaders: Dave & Cindy Taylor

This weekend highlights 2 days of fantastic riding (total 100 mi.) and 2 nights at the beautiful Great Oak Landing Marina and Resort on the Chesapeake Bay at Fairlee Creek near Chestertown, MD. Great Oak has 70 acres of natural beauty with hotel and restaurant, golf, tennis, and water sports.

Friday, May 6-Arrive and explore. At 9 pm we will meet in the lounge to finalize plans for Saturday and get acquainted.

Saturday, May 7-7:30 am breakfast followed by a ride (45 mi) to Eastern Neck National Wildlife Refuge. Several stops are planned

at marinas, wildlife overlooks and bay views. Lunch will be at the Refuge on a platform overlooking the wetlands. Ride pace will be C+, 12-14 mph, over flat terrain with little traffic. Dinner will be at one of Eastern Shore's most famous seafood buffets right in the hotel.

Sunday, May 8-7:30 am breakfast followed by a 55 mile ride around the Chestertown area. Sites will include Tulluah Bankhead's grave in an 18th century church graveyard and some ante bellum mansions. The terrain will be lightly rolling, low traffic volume and the C+ ride will go 11-13 mph. We expect to be back at the hotel by mid-afternoon.

Cost: \$75. per night per room, double occ.  
\$40. deposit required.

Limited # of  
rooms are available.

Contact: Dave at 939-7551 8 am - 5 pm  
Cindy at 236-6427 after 6 pm

## WHAT'S HAPPENING

Congratulations George and Elaine McNeill! George won 2nd place and Elaine won honorable mention in a photography contest sponsored by the Smithsonian Institution. Their winning entries and an additional photo by Elaine will hang in the Air & Space Museum through July. If you happen to be in D. C. stop for a look in the Pioneer of Flight gallery.

Don't Follow The  
Leader Be One!

ADDRESS CORRECTION REQUESTED

POSTAGE GUARANTEED

P.O. BOX 190

NEW CUMBERLAND, PA 17070

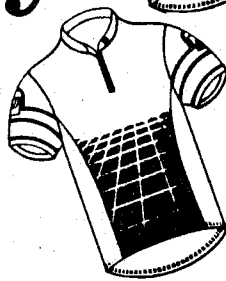
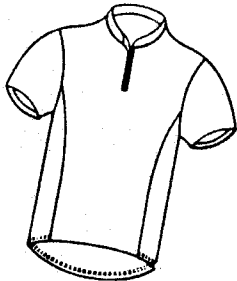
# COLE'S BICYCLES

COME IN AND SEE THE NEWLY

## Great REMODELED CLOTHING DEPARTMENT Cycling Apparel



### Jerseys.



### Shorts.



ROSS

TREK

SCHWINN

RALEIGH

Our Newly Remodeled  
Apparel Department Can  
Outfit You For Early Spring  
Or Make Sure You Are Ready For Summer.

Winter Hours:  
Mon. Tue. Thur. 9-5:30  
Wed. 9-5  
Closed

327 N. HANOVER ST.  
CARLISLE

## Freeloading In Style

by Jason King with Lori King

"Look at that!" "Isn't that cute!" "Can I have a ride?" These are just some of the comments I hear as I travel across the land. You see, I am a bicycle trailer traveler. You might think I have it made, cycling my way through the countryside without actually having to pedal, but it's not as easy as it looks.

Guess where all the odds and ends go that won't fit in the panniers. That's right—I usually end up with a tent at my feet, a sleeping bag next to me on the seat, and grocery bags in my lap (with instructions to guard them with my life until we get to the campground). Now, that's a big responsibility for a little guy like me! I've been pushed, pulled, shoved, and carried over ditches, fences, and brick walls, down the sides of many a hill, through fields and marshes, and even through rush-hour traffic in downtown Seattle. (The cyclists I travel with tend to get lost once in a while.) And I've had more than a few heart-stopping moments when a child-eating dog chasing us down the road came awfully close to jumping in beside me for a free ride and a tasty morsel.

I must admit though, I wouldn't trade my life as a trailer traveler for anything. I'm probably the only kid on the block who realizes you can get from here to there without ever setting foot on the freeway and that there is more to this world than whizzing through life at 55 miles per hour. I bet I've seen more of the beautiful state I live in than most of the adults who have resided there all their lives. But the thing I love most is all the friendly people who smile and wave at me as I pass by.

All in all, I'm afraid my days as a freeloader are numbered. I've heard Mom and Dad talking about a new addition to our family (no, not a baby—another tandem) so I can start doing my share of the pedaling. I guess we all have to grow up sometime. What worries me most though is Mom's retirement plans for the future. When my brother and I start riding tandem together, she's going to relax in the trailer and reap her just rewards. I sincerely hope she's not serious—a thing like that could really cramp our style!

—BICYCLE USA News

### Wheel 'n Dealin

FOR SALE: Campi S. Record SL road pedals (blk).w/campi alum toe clips (lg) & binda-xtra straps; xint cond \$35. Camp S. record SL track pedals (blk) w/cinelli alum toe clips (lg) & binda-xtra straps \$40; 1 pr new duegi mod 101, size 42 (men's 9 1/2) \$30. All prices nego. Call Tony 697-6891 eve before 8 pm.

ALL MATERIAL MUST BE RECEIVED BY THE  
EDITOR BY THE FIRST WEDNESDAY OF THE MONTH  
TO BE INCLUDED IN THE NEXT ISSUE.

## OFFICERS

President	Fred Wilcox	761-3636
Vice-Pres.	Sheryl Albertini	691-7316
	Dale Gill	243-1041
	Mike Noll	732-0768
Treasurer	Joan Short	938-3494
Secretary	Bill Wierman	774-2031 w
	Wendie Wierman	782-6071 w
		737-9346 h

## NUMBERS TO KNOW SPOKESMAN STAFF

Editor	Linda Arnold	763-8828
Asst. Editor	Bill Bolza	657-8127
Advertising	Laurie Feldman	691-7647
Distribution	Bill Wierman	774-2031
Upcoming Rides	Janet Noll	732-0768
Staff	Beverly Volscko, Fran Moore, Dave Biser, Dave Miller, Tracy Bernhar, Tom Helm	

TAKE CARE WHEN A CAR OR TRUCK PASSES  
YOU THAT YOU DON'T AUTOMATICALLY  
ASSUME THE COAST IS CLEAR. ITS A  
NATURAL INCLINATION TO SWING BACK TO  
YOUR LEFT AFTER A VEHICLE PASSES.  
MAINTAIN THE STRAIGHT AND NARROW UNTIL  
YOU'RE SURE.

(717) 599-5468

**MARSHALL B. SACKS**  
CERTIFIED PUBLIC ACCOUNTANT  
R.D. #4, Box 779  
Harrisburg, Pennsylvania 17112

# APPLICATION FOR MEMBERSHIP TO THE HARRISBURG BICYCLE CLUB

*The Harrisburg Bicycle Club strongly urges the use of helmets and The Club cannot accept responsibility for accidents or injury while participating in any event. Riders are urged to consider their ability and experience when selecting a ride.*

MEMBERSHIP NAME \_\_\_\_\_  
ADDRESS \_\_\_\_\_

PHONE W \_\_\_\_\_ H \_\_\_\_\_

OCCUPATION: \_\_\_\_\_

MEMBERSHIP:  NEW  RENEWAL  CHANGE OF ADDRESS

SEND CHECK OR MONEY ORDER TO:

**HARRISBURG BICYCLE CLUB**  
225 West Coover Street, #4  
Mechanicsburg, PA 17055

For membership card, include self-addressed, stamped business size envelope with 39¢.

### RIDING INTERESTS:

- Touring  
 Racing

### I'LL VOLUNTEER FOR:

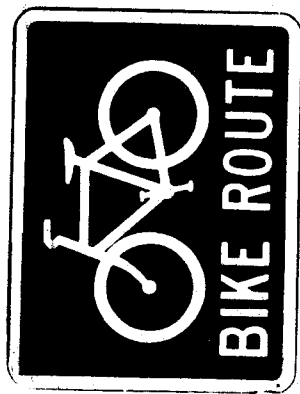
- Newsletter  
 Community Service  
 Ride Leadership  
 Membership  
 Safety  
 Public Relations  
 Special Events (Fall Century, Banquet, Fall Tour)

- Complimentary Copy Of The Newsletter  
 \$8 For New Members Or Renewals After 10th Of The Month  
 \$7 For Renewal Before 10th Of The Renewal Month  
 Donation to Janet A. Pontius Bicycle Safety Foundation:  
\$2 \$5 \$10 \$20 Other  
 Team Harrisburg - Licensed - \$15  
Stock (Unlicensed) \$10  
 Contribution To Team Harrisburg  
\$2 \$5 \$10 \$20 Other  
 \$3.25 Harrisburg Bicycle Club Patch  
Total Amount Enclosed

# THE SPOKESMAN

Harrisburg Bicycle Club  
225 Coover St. #4  
Mechanicsburg, PA 17055

BULK RATE  
U. S. Postage  
Paid  
Harrisburg, PA 17105  
Permit No. 266



Expires: 01/01/89  
Mr. John Ewell  
1201 Wheatfield Drive  
Harrisburg PA 17112

\*NUMBER ON ADDRESS SHOWS  
MONTH MEMBERSHIP RENEWAL  
IS DUE. 1 = JAN. etc. IF CHECK IS  
RECEIVED BEFORE 10th OF THE MONTH  
IT IS DUE, YOU GET A DISCOUNT. SEE  
INSIDE OF BACK COVER.

## MONTHLY CLUB MEETING

WHEN: Tuesday, March 15 at 7:30 pm

WHERE: Christ Presbyterian Church,  
Allendale

About this time last year, John & Joanne Storch spent five weeks touring New Zealand - not on bicycles, as is the dream of any red-blooded touring cyclist, but in a rental motorhome. That allowed for more thorough and extensive coverage of the 2 main islands which comprise this small, independent, English-speaking and utterly fascinating country. Located in the South Pacific, some 1,200 miles S.E. of Australia with a climate like our Pacific coastal area, New Zealand is a "young" nation both geographically and culturally. Terrain and topography varies from sweeping tropical sandy beaches through sub-tropical rain forests, volcanic and underground thermal areas, extensive sheep-grazing "static" towering alpine mountains with glaciers, rugged and nearly inaccessible coastal fiordlands. While John & Joanne did not themselves cycle the islands, they will vouch for the suitability of the roads and countryside to provide on with a most unforgettable experience. Come see their slide presentation of "Kiwi Country".

