

SPOKESMAN



SIDNEY LUSTIG, HARRISBURG BICYCLE CLUB FOUNDER DIES

News came from California on September 17, of the death of, 76 year old, Sidney Lustig. His passing brought to mind some of the early days of HBC that many of you may be interested in hearing about.

Sid and his family were among the first bicyclists in the Harrisburg area when adult cyclists were a novelty. Every time they spied another adult on a bike, they would suggest riding together and even forming a club. On May 5, 1963, there was a note in the paper of a ride to Pinchot Park. There were six of us, including four Lustigs. We never made it to the park because some became exhausted about halfway there. Soon thereafter, the club was organized.

The new club, with only a handful of members, had the largest contingent, 14, at the first GEAR in 1965. It was held at the Bowmansville Youth Hostel near Reading and two years later HBC sponsored the third GEAR at Hershey with 200 people in attendance. It was quite an undertaking and Sid did most of the work!

Then in his 50's, Sid was a great organizer and a health nut who really believe in exercise. He organized rides for poor kids, was Athletic Director of the Jewish Community Center, a staff member of the Harrisburg City Recreation Bureau and later a state employee in the Officer of Aging.

Her retired in 19076 and moved to Florida where he became president of the Sarasota Bike Club. A few years later the Lustigs moved to California to be near their children and again Sid was President. This time of the Irvine Club. His wife Belle writes that in spite of his activity in other clubs, his first love was always HBC. A few years ago, Sid was made an Honorary Life Member of the club, the only person to be so honored. We know that he was proud of how his brainchild turned out.

Mrs. Lustig has made a donation to the club in Sid's memory. We thank her for that and even more for the love and hard work to lay the foundation for HBC. Many people have experienced many wonderful times over the past 25 years.

Jim Kehew

SID LUSTIG MEMORIAL CENTURY

With the recent passing of Sid Lustig, the nation lost not only a great leader, but bicycle clubs lost a great supporter and leader of the bicycle movement. In lasting memorial to Sid, the Operations Committee has voted to permanently rename our annual September Century the "Sid Lustig Memorial Century". Our first leader is gone, but his name will be a lasting tribute to his great deeds within the Harrisburg area.

A monetary contribution to HBC was recently made by his widow, Belle. It has been deposited in our Janet Pontius Safety Fund. The club truly thanks Belle for her thoughts and support of our programs.

Fred Wilcox, President

Did you know that Bill Wierman and Tom Helm swept out a tunnel under Rt. 230 so the bike riders to Cape May wouldn't have to negotiate those terrible railroad tracks across from Penn State, Middletown. Neat! Way to care!

Did you know that two of our club members, Jeff Grove and Dale Bluman are riding recumbent type bicycles. "Whats a recumbent?" It looks like a lawn chair on wheels with the handlebars under your backside. These riders tend to stay on their bikes at rest stops while the rest of us are resting the area we sit on. They smile a lot too!

Did you go to Cape May this year? Do you have any idea of the amount of work that Sheryl Albertini put in to the whole event? WOW! If you haven't said thanks do it NOW! How about that Dave Leroy? He drove the whole bike route to Cape May and made a cue sheet that many people just loved. Way to go Dave!

Cape May is now history and all those long hours many people contributed since last March made it a wonderful memory for those that made the trip.

Special thanks goes to the following: Dave LeRoy did an excellent job preparing the maps and cue sheets and kept the unruly group organized. George and Ginny Olsen took care of the hotel reservations in Newark and Dover and made arrangements for lunch in Delaware City. Handkerchiefs, this year's souvenir, were handled by Wanda Knuth. Scheduled rides in Cape May were handled by Bill Winebrenner. Bill provided a "schedule of events" for the weekend, too. Bill Pickering and Owen Moore assisted Dave with mapping the route down. Karen Bosco rode the Spokesman articles and Fred Wilcox organized the 3 training rides.

For those HBCers who did not make the trip, in addition to the rides and camaraderie, you also missed cheering on many HBCers who took part in the Annual Cape May Run. A big congratulations goes to Bernie Webber who cam in first for his category. Deb Daulton and Rosalie Banker also ran. Hearty congratulations go to Dale Gill for running and completing his first race. On to biathlons now, Dale?

For those of you who did not make the trip this year, there is always 1989, September 20 thru 24th to be exact. Put it on YOUR calendar now.



R. W. FARVER
President

BUSHEY'S SCHWINN CYCLERY
254 Lowther Street / Lemoyne, PA 17043
Phone (717) 774-7071

Schwinn • Peugeot • Mopeds

Sales - Service - Parts - Accessories

HOLMES' BICYCLE SHOP

Corner of 24th & Chestnut Streets
Camp Hill, Pennsylvania 17011
(717) 737-3461

George Holmes

Allen Holmes



AUTHORIZED DEALER
BIANCHI - LOTUS -
SHOGUN - ST. TROPEZ
BELLWETHER CLOTHING

YOUR BMX HEADQUARTERS

3 East Main Street
on the Square
HUMMELSTOWN, PA 17036
Phone 566-0455

Heat Transfer - T's, Caps, Jackets

MILLERSBURG FERRY RIDE REPORT- OFFICIAL

Fourteen eager beavers left the Millersburg Ferry on a sunny Saturday morning. Alas, the ride wasn't exciting enough for Bill Winebrenner, Dennis Major, Bill Sanders and Ginny Olsen, they were soon rolling on the ground. They arose, however with nothing worse than one skinned knee. On to the country store for snacks and the picnic area to eat them. One last climb over Buffalo Mountain and we cruised bank to Liverpool. We had a well deserved rest riding across the river on the ferry, and ate lunch on the other side. The second part of the ride took us by some Amish homes and to another store. After a total of 60 miles, the ferry ride back was heavenly. We finished the day with an impromptu spaghetti dinner at Sue and Vic's. What could be better? Riders:

Wanda Knuth, leader; Sue Azar, Vic Zona, Owen Moore, Art Miller, Bill Winebrenner, Randy Smith, George Olsen, Ginny Olsen, Ed Becker, Sheryl Albertini, Bill Sanders, Rosalie Baker, Dennis Major.

Dear Editor: I am writing in regard to a Cape May Training ride on September 10, 1988, led by Wanda Knuth. Our group secretly decided that this ride was so well organized and well planned, that we'd like an additional item in the Spokesman. Special kudos go to Wanda Knuth for leading the Millersburg Ferry Ride. Her planning was very evident, from the "HBC" signs posted on the highway construction areas leading to the ferry. Wanda even managed to arrange special fares for the bicycle people.

The trip was located in two counties, the first half in Perry. The weather was beautiful, a sunny, warm fall day. There were some HILLS but the pace was nice and what goes up must come down. There was even a spill, as several of us got bunched together going up a hill. Someone's chain slipped; someone else hit the tire and down a few

went! After a brief inspection and first aid, the group moved on to see more lovely Perry County sights.

We arrived at the Millersburg Ferry around 1 pm and enjoyed crossing the Susquehanna on this vessel. One of the Ferrymasters, "Fish", was quite interested in our group, and Sheryl Albertini led an HBC rendition of "Happy Birthday" to celebrate Fish's special day.

We stopped for lunch on the Millersburg side of the Susquehanna River. Lying on the river bank, we had a serious discussion about having a designated rider complete the Dauphin County loop while the rest remained recumbent. Ed Becker considered halving the distance since he wanted to be back in time to go to a dance that evening.

True to the spirit of the group, however, everybody rode the Dauphin County portion in good form and humor. We passed through Berrysburg where there is a wonderful old Victorian structure that houses a retirement home. Rosalie Banker stated that she could be found there at age 90 with her three wheeler parked in the front.

Vic Zona prove the uselessness of the "zapper" devices in keeping dogs away. Sprays from water bottles worked much better!

The ride was really a special one. The planning and thought put into it by Wanda was most appreciated by the group. As we crossed the Ferry at the end of the day, and watched the egrets fly on the river, we couldn't help but think what a special group of people we met and that wonderful places we see through the HBC.

BICYCLING

COLE'S BICYCLES

Foul Weather Clothing



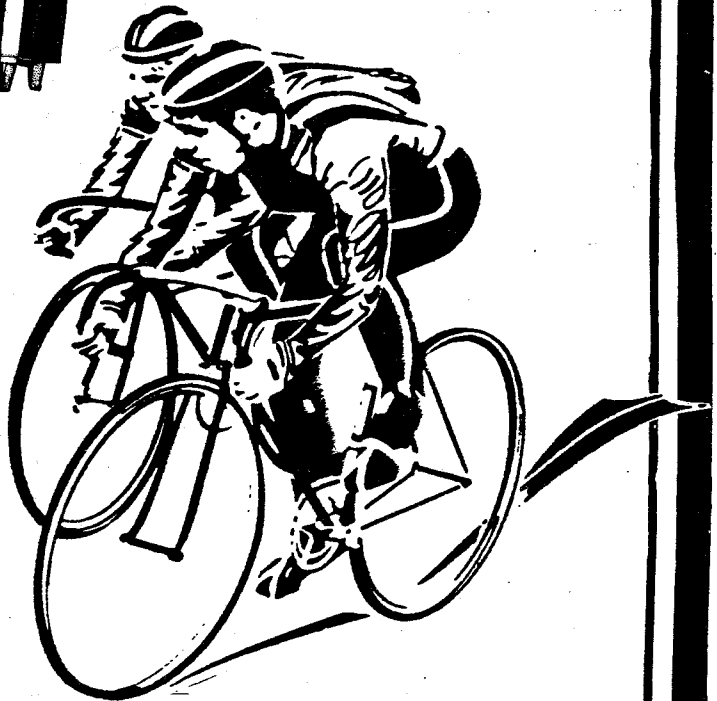
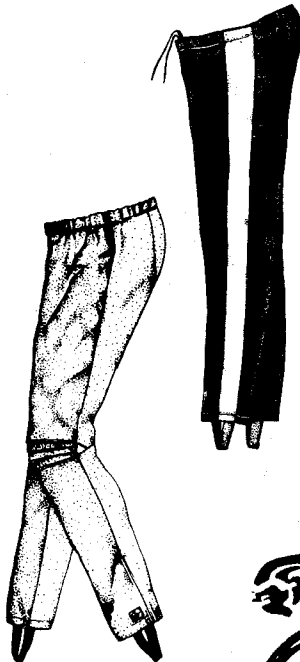
- Long Sleeved Jerseys

- Wind Jackets

- Wind Pants

- Tights

- Booties



**We take
your biking
seriously.**

327 N. HANOVER ST.
CARLISLE, PA.

1989 SERVICE CLINIC

What a great year its been for bicycle riding! Would you like to:

- enhance the performance of your trusty steed for another year?
- learn how that lovable bundle of tubes, cables, gears, and chains all come apart and go together again?
- learn how to be self-sufficient when you're on that long tour you're planning for next year?

Well its time for you to sign up for HBC's annual service clinic.

Over a period of four sessions, totaling sixteen hours, we'll teach you in a hands-on (you with hands on bicycle) to disassemble, overhaul the major components, and put your bike into top condition for the coming season. In this process you'll learn how the various components of the bike work and have a fun time with other members doing the same thing. For each 4 or 5 bikers working on their bikes we'll have an instructor to assist you when you get stuck. We take the approach you've never picked up a wrench before but would like to consider the possibility.

The clinic is normally held on Saturday mornings 8 AM to 12 noon from mid January to mid February. The actual dates and place haven't been set yet but should be in place by the time you receive this newsletter. If you're interested you can phone Bill or Patty Baughman @ 938-8034 OR wait for full details and registration form in the January Spokesman.

IF YOU HAVE EXPERIENCE and could help with one or more sessions, call to offer your assistance.

SPINNERS AND GRINNERS
9-14-88 21 Miles

Eleven riders turned out on Wednesday evening to race the sun down. Harry Banzhoff picked up the leadership and lead us on a ride that dipped and dived all around the area but not into Boiling Springs. Way to go Harry!

SPINNERS & GRINNERS
9-28-88 11.0 Miles

This year's final chapter of the Wednesday night Spinners 'n Grinners story was written September 28th, when eight hearty riders showed up to race the setting sun. Along with six regulars we welcomed Nancy Hannon, back for a club ride after a two year hiatus, and Sandy Enterline on her first club ride. If you see these folks on other rides say "hello".

John Layne (L)

Owen Moore

Nancy Hannon

Tracy Rainelli

Jim Long

Matt Long

Sar y Enterline

Wanda Knuth

PS e also enjoyed the goodies at Peaches and Cream. Ummmmm!

JOHN'S SCHWINN CYCLERY
48 HOUR REPAIR SERVICE AVAILABLE

 **SALES & SERVICE**

MON - WED - THURS 9 AM - 6 PM TUES & FRI 9 AM - 9 PM
SAT 9 AM - 5 PM

(RT. 422) 406 E. PENN AVE. CLEONA

273-4477 • **MOTOCROSS**
• **EXERCIZING EQUIPMENT**

Sunday Morning Sociable
9-25-88 9.78 Miles

In spite of the rain and many bikers off on the Cape May weekend seven hardy and maybe a little off the wall bikers met, fixed a flat, checked out the Riverfront Village, and took a tour to West Fairview before having breakfast at the Alva. Murray Sperling (L) John White
Chris Doran Brad Smith
Leslie Varnicle Sandy Hower
Ann Shenck Dallam

THANKS TO DERRY TOWNSHIP

We wish to give our thanks to Derry Township for the use of Shenk Park for the Century. Not only were they generous hosts, not charging us AND covering us with liability insurance, but they also helped with the promotional efforts. A donation from the registration proceeds was voted by the Operations Committee as a token of our thanks to Derry Township.

ALL MATERIAL MUST BE RECEIVED BY THE EDITOR BY FIRST WEDNESDAY OF THE MONTH TO BE INCLUDED IN THE NEXT ISSUE !

SPOKESMAN STAFF

Editor Linda Gerkenmeyer 763-8826
 Asst. Editor Bill Bolza 657-8127
 Advertising Laurie Feldman 691-7647
 Upcoming Rides Janet Noll 732-0768
 Distribution Bill Wierman 774-2031
 Staff Cheryl Capitani, Jeff Grove, Tom Helm, Dave Miller, Mike Noll, Tracy Rainelli, Beverly Volscko,

OFFICERS

President Fred Wilcox 761-3636
 Vice-Pres. Sheryl Albertini 691-7316
 Dale Gill 243-1041
 Mike Noll 732-0768
 Treasurer Joan Short 938-3494
 Secretary Bill Wierman (w)774-2031
 Wendie Wierman (w)782-6071
 (h)737-9346

RIDE CO-ORDINATORS

Carlisle A/B Pam Spence 243-6224
 C/D Dale Gill 243-1041
 Chambersburg Mike Witter 263-5631
 East Shore A/B VOLUNTEER NEEDED
 C/D Bill Pickering 232-1326
 Family rides VOLUNTEER NEEDED
 Hershey Julia Waldron 533-4402
 Chris Waldron 533-4402
 Singles rides Bill Winebrenner 599-5092
 West Shore A/B Grace House 766-4054
 C/D Dale Glacken 938-8266

HBC ride schedules: Janet Noll
 617 Erford Road
 Camp Hill, PA 17011

Spokesman material except ride schedules:
 Linda Gerkenmeyer
 722 Bosler Ave
 Lemoyne, PA 17043

APPLICATION FOR MEMBERSHIP TO THE HARRISBURG BICYCLE CLUB

The Harrisburg Bicycle Club strongly urges the use of helmets and The Club cannot accept responsibility for accidents or injury while participating in any event. Riders are urged to consider their ability and experience when selecting a ride.

MEMBERSHIP NAME _____
 ADDRESS _____
 PHONE W _____ H _____
 OCCUPATION: _____
 MEMBERSHIP: NEW RENEWAL CHANGE OF ADDRESS
 SEND CHECK OR MONEY ORDER TO:

HARRISBURG BICYCLE CLUB
 225 West Coover Street, #4
 Mechanicsburg, PA 17055

RIDING INTERESTS:

- Touring
 Racing

ILL VOLUNTEER FOR:

- Newsletter
 Community Service
 Ride Leadership
 Membership

- Group Rides
 Biathlon/Triathlon

- Safety
 Public Relations
 Special Events (Fall Century, Banquet, Fall Tour)

- Complimentary Copy Of The Newsletter
 \$8 For New Members Or Renewals After 10th Of The Month
 \$7 For Renewal Before 10th Of The Renewal Month
 Donation to Janet A. Pontius Bicycle Safety Foundation:
 \$2 \$5 \$10 \$20 Other
 Team Harrisburg - Licensed - \$15.
 Stock (Unlicensed) \$10
 Contribution To Team Harrisburg
 \$2 \$5 \$10 \$20 Other
 \$3.25 Harrisburg Bicycle Club Patch
 Total Amount Enclosed _____

For membership card, include self-addressed, stamped business size envelope with 45¢

November 1988



TEAM HARRISBURG

-Central PA Racing-

sponsored by Holmes Bicycle Shop, Bianchi, Bubba's Breakaway, and Suntour

Team Harrisburg Banquet

Mark November 19 on your calendar for Team Harrisburg's Annual Awards Banquet. The Banquet will again be held at Casa Rillo Restaurant in Camp Hill and will feature some fine Italian Food. It's our last chance to get together and show our appreciation for all the people who have made 1988 a memorable year for Team Harrisburg. Awards will be presented to individuals who have made outstanding contributions to Team Harrisburg this year as well as awards for the Rainbow Cycles Time Trial Series.

The festivities will begin with socializing at 6:00 PM. and dinner starting at 7:00 PM Saturday, November 19, 1988. Cost for the evening will be \$ 16.00 per person and must be paid in advance. Send a check or money order to Mary Ann Parmer at the address below.

Mary Ann Parmer
7912 Umberger St.
Harrisburg, PA 17112

Directions to Casa Rillo Restaurant:

From Harrisburg, take the Harvey Taylor bridge toward Camp Hill, turn right on 21st street the restaurant is across from the Holy Spirit Hospital. From the west shore take the Harrisburg Expressway west to the Camp Hill exit. Follow routes 11 and 15 north through Camp Hill to 21st street. Turn left onto 21st street and you will see the restaurant about one block near the Holy Spirit Hospital.

Casa Rillo Restaurant
451 N. 21st Street
Camp Hill, PA

Rainbow Cycles Time Trial Series

The Rainbow Cycles Time Trial Series is now history and the results are in. A total of 161 riders participated in this series and the final results are based on the fastest 5 times recorded for each rider. The fastest time for the year was for the men a 10:59 by Ralph Saxman and for the women a 12:46 by Cindy Maurer. The results appear on the following page. The times listed are the total of the 5 fastest times for each rider.

Rainbow Cycles Time Trial Series Results:

Stock Women 18-29		Stock Men 40-49	
1 Diane Lehman	1:07:25	1 Bruce Irvin	0:59:23
2 Annette Prins	1:09:24	2 Chuck Hoffman	1:04:26
Stock Women 30-39		3 Tim Zeigler	1:04:47
1 Cindy Maurer	1:04:37	4 Jeff Lefevre	1:07:25
2 Deb Rosenberry-McKee	1:10:50	Stock Men 50 and Over	
Stock Women 40 and Over		1 Larry Parmer	1:02:56
1 Rachel Irvin	1:08:09	USCF Junior Men	
Stock Men under 15		1 Blaine Feeser Jr.	0:57:09
1 Chad Walmer	1:06:05	2 Nate Hukill	0:58:41
Stock Men 15-17		3 Joe Brazel	1:00:07
1 Fred Billet	1:00:42	4 Hans Bakermans	1:00:56
2 Bryan Zimmerman	1:01:25	5 Erin Witter	1:01:01
3 Mike Spahr	1:04:29	6 Eric Thumma	1:02:51
4 Ken Senft	1:06:00	USCF Senior Men	
5 Phil Sullivan	1:11:02	1 Dan Daly	0:57:59
6 Randy Bittinger	1:11:21	2 Bob Latsha	0:58:02
Stock Men 18-29		3 Jeff Miesemer	0:58:52
1 Shawn Withers	0:59:53	4 Eric Moon	0:59:05
2 Steve Thome	1:00:01	5 Dave Clark	0:59:53
3 Rick Fry	1:00:14	6 Will Kennedy	1:00:01
4 Jeff Johnson	1:02:46	7 Gary Krieger	1:00:40
5 Ed Slagle	1:03:18	8 Jeff Nelson	1:02:38
6 Troy Gutshall	1:04:19	9 Rick Handley	1:02:53
7 Dave Henry	1:05:24	10 Rod Cook	1:03:08
8 Jeff Patrick	1:06:07	11 Ray Peske	1:05:33
9 Mike Kamstra	1:10:13	USCF Master 35 Men	
Stock Men 30-39		1 Ralph Saxman	0:56:14
1 Bob Banks	1:00:39	2 Gordon Sheetz	0:56:52
2 Dave Lehman	1:01:56	3 Mike Smith	0:57:35
3 Jeff Lomison	1:02:09	4 Jim Hartnett	1:02:22
4 Ken Snyder	1:02:13	5 Rich Kief	1:03:01
5 Blaine Feeser Sr.	1:04:10		
6 Bob Sutherly	1:05:23		
7 Rich Bolden	1:08:27		

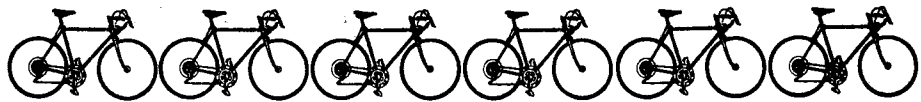
Classified

For Sale: 58 cm. Vitus 979 bicycle, white, Campagnolo Chorus crank, Mavic derailleurs and shift levers, Mavic hubs with Mavic Open 4CD Clincher Rims, Look pedals, Dia Compe 400 brakes, Scott DH handlebars. Asking \$ 500. Contact: Julian Adams 238-0231.

Team Harrisburg Board Members

President: Tim Zeigler236-4104
 Road Leader: Ken Siptroth774-2994
 Treasurer: Cindy Maurer652-4799
 Secretary: Jeff Lefevre697-2604
 Newsletter Editor: Rick Handley564-2752

Attention Riders



RIDE CLASSIFICATION

GROUP RIDES - The rider and the ride leader are responsible for keeping the group together. Average speeds indicated will vary depending on the terrain, weather, and time of year, but should fall within averages stated. Stops taken when needed for rest or to keep the group together.

SOCIAL (D) - for the cyclist who enjoys an easy, social pace. A few easy hills are possible. 10 speed bikes not necessary for these rides. Speed will average 8 - 10 mph. Distances generally 8-12 miles.

CASUAL (C) - for the cyclist who would like to socialize but wants the challenge of a longer distance and a little more challenging terrain. Average speed 10-12 mph. Slow easy pace on hills. Distances planned are generally 20-25 miles. A stop will be made at least every 10 miles, more if necessary.


TOUR PACE (C+) - A good training ride for touring. Rides will generally be longer and contain more hills than the casual ride. Pace will slow down going up hills. Average speed 11-13 mph. Distance is generally 25-45 miles. A stop will be made at least every hour, more if necessary.

FAST GROUP (B) - A faster pace for experienced riders in good physical condition. Steeper hills are a possibility. Pace will slow down a bit uphill but riders are expected to stay with the group. Average speed 14-17 mph. Distances generally 25-35 miles. Stops when necessary.

TRAINING RIDES - The riders and the ride leader are responsible for keeping the group together. Average speeds will vary depending on terrain, weather, distance and the time of year, but should fall within averages stated. Riders on training rides should be in good physical condition and capable of maintaining a steady pace. Bicycles should be well maintained. Expect few stops if any.

B+ - A bit faster than the fast group and could cover a longer distance. If numerous hills are included the pace will generally be 14-17 mph. If terrain is flatter, speed will generally average 17-19 mph. Pace will slow down a bit up hill but riders are expected to stay with the group. Riders should be expected to maintain a fast pace for distances up to 50 miles. Stops only when necessary.

A - For riders in top physical condition and seriously interested in competitive bicycling. Speed will average 20+ mph. Few hills are anticipated but riders are expected to maintain pace up hill. Emphasis is on conditioning. Stops only when necessary.

 Although every attempt is made to make club rides as safe as possible, HBC assumes no liability for the safety of those participating in its rides. Riders taking part do so at their own risk and are responsible for their own safety.

November Ride Schedule

WEEKENDS....

SATURDAY November 5, 1988

B+ 35+ mi 17+ mph 12:00 am Carlisle MJ Mall Leader: Pam Spence 243-6224
Ken Cramer 249-5778
Gerry Cramer 249-6125

Fun exciting rides... Always call to be sure the ride is going!

B 35 mi 13-15 mph 1:00 pm Mechanicsburg HS Leader: Joan Short 938-3494
BUZZIN' WITH THE B'S

C 20-25 mi 10-12 mph 1:00 pm Mechanicsburg HS Leader: Show 'N' Go
SPINNERS 'N' GRINNERS

=====

SUNDAY November 6, 1988

D 10 mi 9 mph 7:15 am City Island Leader: Owen Moore 761-4822
SUNDAY SOCIABLE - Better start thinking of the warmer clothing you'll need when you come rolling out on these last few Sundays. It gets a bit nippy at times, but the hot coffee, chocolate, and Tea afterward sure hits the spot.

B/B+ 30+ mi 16+ mph 12:00 pm Carlisle MJ Mall Leader: Pam Spence 243-6224
Al Padilla 243-0190
Dan Heatherly 249-6584

Always call to be sure the ride is going!

C 20-25 mi 10-12 mph 1:30 pm Mechanicsburg HS Leader: Show 'N' Go
SPINNERS 'N' GRINNERS

B 40-50 mi 15-17 mph 1:30 pm Mechanicsburg HS Leader: Phil Heisley 737-5957
BUZZIN' WITH THE B'S

=====

SATURDAY November 12, 1988

B+ 35+ mi 17+ mph 12:00 am Carlisle MJ Mall Leader: Pam Spence 243-6224
Ken Cramer 249-5778
Gerry Cramer 249-6125

Fun exciting rides... Always call to be sure the ride is going!

B 45+ mi 14-16 mph 1:00 pm Mechanicsburg HS Leader: Dan Miles 763-1006
BUZZIN' WITH THE B'S

C 20-25 mi 10-12 mph 1:00 pm Mechanicsburg HS Leader: Show 'N' Go
SPINNING AND GRINNING

=====

SUNDAY November 13, 1988

D 10 mi 9 mph 7:15 am City Island Leader: Owen Moore 761-4822
SUNDAY SOCIABLE - Three to go! Have you ever thought that when you pass up an event even the Sunda Sociable that you've passed it up for life on this date. Don't let the good times pass you bye. See you on the Island.

B+ 30+ mi 16+ mph 10:00 am Carlisle MJ Mall Leader: Pam Spence 243-6224
Al Padilla
Dan Heatherly

B 35-40 mi 14-16mph 1:00 pm Mechanicsburg HS Leader: John Lampi 697-6676
BUZZIN' WITH THE B'S

C 20-25 mi 10-12 mph 1:30 pm Mechanicsburg HS Leader: Show 'N' Go
SPINNERS 'N' GRINNERS

=====

SATURDAY November 19, 1988

B+ 35+ mi 17+ mph 12:00 am Carlisle MJ Mall Leader: Pam Spence 243-6224
Ken Cramer 249-5778
Gerry Cramer 249-6125

Fun exciting rides... Always call to be sure the ride is going!

B 30-35 mi 13-15 mph 1:00 pm Mechanicsburg HS Leader: Dennis Major 766-6598
BUZZIN' WITH THE B'S

C 20-25 mi 10-12 mph 1:00 pm Mechanicsburg HS Leader: Show 'N' Go
SPINNERS 'N' GRINNERS

=====

SUNDAY November 20, 1988

D 10 mi 9 mph 7:15 am City Island Leader: Owen Moore 761-4822
SUNDAY SOCIABLE - Two to go! Don't forget those gloves. It's getting a little colder
each Sunday, but this friendly crowd warms the day and makes it all worthwhile.

B/B+ 30+ mi 16+ mph 12:00 pm Carlisle MJ Mall Leader: Pam Spence 243-6224
Al Padilla 243-0190
Dan Heatherly 249-6584

Always call to be sure the ride is going!

B 30 mi 15 mph 1:30 pm Mechanicsburg HS Leader: George Olson 938-1489
BUZZIN' WITH THE B'S

C 20-25 mi 10-12 mph 1:30 pm Mechanicsburg HS Leader: Show 'N' Go
SPINNERS 'N' GRINNERS

=====

SATURDAY November 26, 1988

B+ 35+ mi 17+ mph 12:00 am Carlisle MJ Mall Leader: Pam Spence 243-6224
Ken Cramer 249-5778
Gerry Cramer 249-6125

Fun exciting rides... Always call to be sure the ride is going!

B 30 mi 12-14 mph 1:00 pm Mechanicsburg HS Leader: Grace House 766-4054
BUZZIN' WITH THE B'S here's a great thing to do today.

C 20-25 mi 10-12 mph 1:00 pm Mechanicsburg HS Leader: Show 'N' Go
SPINNERS 'N' GRINNERS

=====

SUNDAY November 27, 1988

D 10 mi 9 mph 7:15 am City Island Leader: Owen Moore 761-4822
SUNDAY SOCIABLE - Last Sociable of the Season... Come and enjoy. Then after the bike
ride join us for breakfast. Next Sunday many of these people will be meeting for
breakfast at the Alva, without their bikes, at 8:00 am. Come on out, rub some elbows,
drink some coffee, and make some new friends.

B/B+ 30+ mi 16+ mph 12:00 pm Carlisle MJ Mall Leader: Pam Spence 243-6224
Al Padilla 243-0190
Dan Heatherly 249-6584

Always call to be sure the ride is going!

B 30 mi 15 mph 1:30 pm Mechanicsburg HS Leader: Joan Short 938-3494
BUZZIN' WITH THE B'S

C 20-25 mi 10-12 mph 1:30 pm Mechanicsburg HS Leader: Show 'N' Go
SPINNERS 'N' GRINNERS

=====

NOVEMBER 24, 1988 (Thanksgiving Day) "ONLY"

C- 15 mi ??? 8:00 am City Island Leader: Bill Wierman 737-9346

Why not justify the big meal of the day by taking in an early morning jaunt up the river? The ride will go weather permitting... If in doubt, call Bill.

B 35 mi 13-15 mph 9:00 am Mechanicsburg HS Leader: John Lampi 697-6676

THANKSGIVING DAY CALORIE BURNER

B/B+ 30+ mi 16-18 mph 10:00 am Carlisle MJ Mall Leader: Pam Spence 243-6224

TURKEY DAY SPECIAL - Feast on some exercise today, weather permitting.

DECEMBER 12, 1988 - MARCH 12, 1989

Sunday Sociable -- The Sociable continues at the Alva without bikes except on warm Sundays. Meet with the breakfast crew at 8:00 am and enjoy the tales of 1988 and the hopes of 1989.

ST NATIONAL
INDOOR
BICYCLE
RACE



SCHWINN® Velodyne™

ere's what it's all about...

Course: The '88 Summer Games Road Race (two-mile segment)
Prizes: Over \$75,000 worth of product prizes
Vehicle: The Schwinn Velodyne
When: November 10-20, 1988

The Setting:

Ski-kc



564-4920

7416 Derry Street
Harrisburg, Penna.

"Harrisburg's Complete Cyclery"
FACTORY AUTHORIZED Sales & Service

Bicycle Clothing ● Oakley Products

● Skateboards ● Exercise Equipment

For a \$5 race entry fee, race participants automatically receive event water bottle and one year's subscription to *Winning* magazine - if not a current subscriber.

The top five riders with the best time, are eligible to receive one of five prizes

PRIZE LIST

Suggested Retail Value

1st Place	Paramount Helmet	\$65.00
2nd Place	Paramount Computer I	\$45.00
3rd Place	Paramount Gloves	\$17.00
4th & 5th Place	Paramount Bottle Cage	\$ 7.95

NATIONAL PRIZE LIST

GRAND PRIZE	Kestrel Frameset with Dura Ace Gruppo
2ND PLACE	Schwinn Aluminum Racing Bicycle
3RD PLACE	Prologue Frameset



This is a machine for the serious athlete. Schwinn Velodyne—an engineering feat of computer technology that actually simulates outdoor racing. With your own bike. In your

As President of HBC, it is my honor to recognize and thank Jeff for his outstanding efforts in making this year's Century Ride a great success. Jeff selected the route, prepared the cue sheets and marked the highway with various symbols. It was so well done that it was impossible to get lost.

Wayne Stoltzfus, Cheryl Capitani, Dennis Major, Mike Baum, John McCoy, George Hellman, and their helpers worked with Jeff to make the event a real success. A great job, THANKS!

ANNUAL BANQUET

WHEN: Saturday, January 14, 1989
WHERE: Christ Presbyterian Church
Allendale, Camp Hill

Mark your calendar now! Start thing food, fun, and friends. Plan to take part in this family event. Bill Winebrenner is planning some gastronomical treats. A slide show on Cape May is being concocted. Think about awards you would like to make.

Chairperson for this year's event is Jill Lichty. Jill is currently putting together a committee. She needs your help so call her at 732-4836. Fred Wilcox is co-ordinating the awards and can be reached at 761-3636. More information will be in the January newsletter. Stay tuned.

SPINNERS & GRINNERS 8-24-88 or
Weather Attitude Check-up!

Fifteen riders showed they had the "right stuff" when they showed up for the start of the Wednesday evening C ride out of Mechanicsburg. It was RAINING! Ahh, but the proper weather attitude is to always go to the ride as if the ride was going ahead and the rain would stop . . . or at least pause a bit. It did and we had a delightful ride!

The leader made up the ride as we went and we visited some roads many regulars hadn't seen for sometime. A proper C pace was maintained.

Owen Moore	Patrica Juliana
Sue Martz	Rob Straub
Ed Becker	Will Kenyon
Crystal/Glenn Haagen	
Gary Lichty	Wanda Knuth
Lynn Clemons	Bill Bolza
Ron/Judy Stabach	Don Souder

By action of the Operations Committee, there will be a slight change in the dues structure for the club effective January 1, 1989. The cost of a new membership will be increased from \$8.00 to \$9.00. The cost of renewing by the 10th of the expiration month will remain at \$7.00. After the 10th of the month, renewals will be \$8.00.

The increase will help to offset the cost of mailing newsletters, membership cards, safety information and other information. Some of the need for higher membership cost is due to fewer people including a self addressed envelope as the application requests.

For renewing members, the price break for prompt payment hopefully will be an incentive to get your payment in promptly. This also helps the Membership Chairman and keeps club costs down. To determine your renewal month, check the mailing label on your newsletter.

Where else can you get such a bargain! Pay promptly and keep the costs down.

NEW MEMBERS - SEPTEMBER

Camp Hill:	Chris Durboron A. G. Farina, Jr.
Carlisle:	Lance Cameron Frank Coffey
Dillsburg:	John Pedlow
Harrisburg:	Diane Geise
Lebanon:	Michael Gelmartin
Manchester:	Deron Wagner
Mechanicsburg:	Denise Alderman Brian Barber Ellen Schaeffer
New Cumberland:	Dave Stewart
Summerdale:	Andy Mutch

FOUND: Spatula left at the last HBC Award Banquet. Call Mike Barrick at 766-4090.

Harrisburg Bicycle Club
P.O. Box 190
New Cumberland, PA 17070

BULK RATE
U. S. Postage
Paid
Harrisburg, PA 17105
Permit No. 266

*NUMBER ON ADDRESS SHOWS
MONTH MEMBERSHIP RENEWAL
IS DUE. 1 = JAN. etc. IF CHECK IS
RECEIVED BEFORE 10th OF THE MONTH
IT IS DUE, YOU GET A DISCOUNT. SEE
INSIDE OF BACK COVER.



NOVEMBER CLUB MEETING

TUESDAY, NOVEMBER 15th, 7:30 PM
CHRIST PRESBYTERIAN CHURCH ALLENDALE
(near Cedar Cliff H. S.)

Program: "A Smorgasbord of 1989
Biking Events"

Since most of our best events include food in some way we thought we'd get your attention with the food idea. Actually various members of our club will be giving you a capsule comment on a variety of major biking events that will whet your appetites for the 1989 season. You'll learn what GEAR, Freedom Valley Tour, Spring Fling, NYC Five Boro Bike Tour, Covered Bridge Tour, X-Pennsylvania Tour, TOSRV, and more are all about.

This is an ideal time to learn about many of the big and special events, what you have to do to participate, who else might be going, and when its going to be. Then over coffee (there's that food idea again) you'll have an opportunity to ask these members who've been there any special questions you might have.

Once you size it all up, then write your letter to Santa and tell him which event you want to attend next year. Ahh! visions of tours dancing in our heads! See you there!

